

ANYRIDGE® Fixture Line up

Same fixture diameter, yet different core diameters & thread depths

Commonly Used Sizes Moral Extraction Options

Core Diameter	Fixture Diameter									
	Ø3.5	Ø4.0	Ø4.5	Ø5.0	Ø5.5	Ø6.0	Ø6.5	Ø7.0	Ø7.5	Ø8.0
Ø2.8										
Thread depth	0.3									
Ø3.3										
Thread depth		0.35	0.6	0.85	1.1					
Ø3.8										
Thread depth			0.35	0.6	0.85					
Ø4.0										
Thread depth				0.45	0.7	0.95				
Ø4.3										
Thread depth				0.35	0.6	0.85				
Ø4.8										
Thread depth					0.35	0.6	0.85	1.1	1.35	1.6

Available Lengths (mm): [7.0, 8.5, 10, 11.5, 13, 15, 18] [7.0, 8.5, 10, 11.5, 13]
*ø3.5, ø4.0, ø4.5 – 18mm option

Biologic Molar Solutions

II. Fixture Size

Small Ø3.5

- Cover Screw included.
- Availability of 7mm product is subject to local approval.

Fixture	Core (mm)	Length	Ref.C
3.5	2.8	8.5	FANIFX3508C
		10	FANIFX3510C
		11.5	FANIFX3511C
		13	FANIFX3513C
		15	FANIFX3515C
		18	FANIFX3518C



Regular Ø4.0

- Cover Screw included.
- Availability of 7mm product is subject to local approval.

Fixture	Core (mm)	Length	Ref.C
4.0	3.3	8.5	FANIFX4008C
		10	FANIFX4010C
		11.5	FANIFX4011C
		13	FANIFX4013C
		15	FANIFX4015C
		18	FANIFX4018C



Regular Ø4.5

- Cover Screw included.

Fixture	Core (mm)	Length	Ref.C
4.5	3.3	7	FANIFX4507C
		8.5	FANIFX4508C
		10	FANIFX4510C
		11.5	FANIFX4511C
		13	FANIFX4513C
		15	FANIFX4515C
		18	FANIFX4518C
4.5	3.8	7	AR384507C
		8.5	AR384508C
		10	AR384510C
		11.5	AR384511C
		13	AR384513C
		15	AR384515C
		18	AR384518C



☛ Fixture Size (Continued)

Wide Ø5.0

- Cover Screw included.



Fixture Diameter (mm)	Core (mm)	Length (mm)	Ref.C
5.0	3.3	7	FANIHX5007C
		8.5	FANIHX5008C
		10	FANIHX5010C
		11.5	FANIHX5011C
		13	FANIHX5013C
		15	FANIHX5015C
5.0	3.8	18	FANIHX5018C
		7	AR385007C
		8.5	AR385008C
		10	AR385010C
		11.5	AR385011C
		13	AR385013C
5.0	4.3	15	AR385015C
		18	AR385018C
		7	AR435007C
		8.5	AR435008C
		10	AR435010C
		11.5	AR435011C
5.0	4.3	13	AR435013C
		15	AR435015C
		18	AR435018C

Fixture Diameter (mm)	Core (mm)	Length (mm)	Ref.C
5.0	4.0	7	FANIHX5007SC
		8.5	FANIHX5008SC
		10	FANIHX5010SC
		11.5	FANIHX5011SC
		13	FANIHX5013SC
		15	FANIHX5015SC
5.0	4.3	18	FANIHX5018SC
		7	AR435007C
		8.5	AR435008C
		10	AR435010C
		11.5	AR435011C
		13	AR435013C
5.0	4.3	15	AR435015C
		18	AR435018C

Wide Ø5.5

- Cover Screw included.



Fixture Diameter (mm)	Core (mm)	Length (mm)	Ref.C
5.5	3.3	7	FANIHX5507C
		8.5	FANIHX5508C
		10	FANIHX5510C
		11.5	FANIHX5511C
		13	FANIHX5513C
		15	FANIHX5515C
5.5	3.8	18	FANIHX5518C
		7	AR385507C
		8.5	AR385508C
		10	AR385510C
		11.5	AR385511C
		13	AR385513C
5.5	4.3	15	AR385515C
		18	AR385518C
		7	AR485507C
		8.5	AR485508C
		10	AR485510C
		11.5	AR485511C
5.5	4.8	13	AR485513C
		15	AR485515C
		7	FANIHX5507SC
		8.5	FANIHX5508SC
		10	FANIHX5510SC
		11.5	FANIHX5511SC
5.5	4.8	13	FANIHX5513SC
		15	FANIHX5515SC

Fixture Diameter (mm)	Core (mm)	Length (mm)	Ref.C
5.5	4.3	7	AR435507C
		8.5	AR435508C
		10	AR435510C
		11.5	AR435511C
		13	AR435513C
		15	AR435515C
5.5	4.8	18	AR435518C
		7	AR485507C
		8.5	AR485508C
		10	AR485510C
		11.5	AR485511C
		13	AR485513C
5.5	4.8	15	AR485515C

☛ Fixture Size

Super Wide Ø6.0

- Cover Screw included.

Fixture Diameter (mm)	Core (mm)	Length (mm)	Ref.C	
6.0	4.0	7	AR406007C	
		8.5	AR406008C	
		10	AR406010C	
		11.5	AR406011C	
		13	AR406013C	
		7	AR436007C	
	6.0	4.3	8.5	AR436008C
			10	AR436010C
			11.5	AR436011C
			13	AR436013C
			7	FALIHX6007C
			8.5	FALIHX6008C
6.0	4.8	10	FALIHX6010C	
		11.5	FALIHX6011C	
		13	FALIHX6013C	



Super Wide Ø6.5

- Cover Screw included.

Fixture Diameter (mm)	Core (mm)	Length (mm)	Ref.C
6.5	4.8	7	FALIHX6507C
		8.5	FALIHX6508C
		10	FALIHX6510C
		11.5	FALIHX6511C
		13	FALIHX6513C



Super Wide Ø7.0

- Cover Screw included.

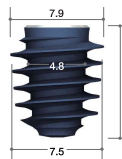
Fixture Diameter (mm)	Core (mm)	Length (mm)	Ref.C
7.0	4.8	7	FALIHX7007C
		8.5	FALIHX7008C
		10	FALIHX7010C
		11.5	FALIHX7011C
		13	FALIHX7013C



Super Wide Ø7.5

- Cover Screw included.

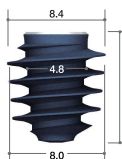
Fixture Diameter (mm)	Core (mm)	Length (mm)	Ref.C
7.5	4.8	7	FALIHX7507C
		8.5	FALIHX7508C
		10	FALIHX7510C
		11.5	FALIHX7511C
		13	FALIHX7513C



Super Wide Ø8.0

- Cover Screw included.

Fixture Diameter (mm)	Core (mm)	Length (mm)	Ref.C
8.0	4.8	7	FALIHX8007C
		8.5	FALIHX8008C
		10	FALIHX8010C
		11.5	FALIHX8011C
		13	FALIHX8013C



Short Implant Solution

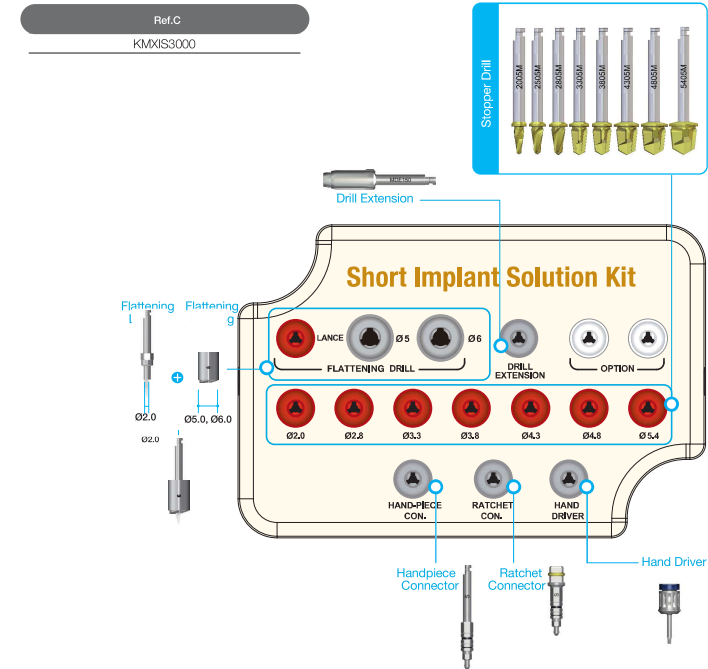
For special use in case of limited vertical dimension (minimum bone depth: 5 / 6mm)

Quick Reminder

Quick Reminder

Diameter & Core		Fixture Diameter				
		Ø3.5	Ø4.0	Ø4.5	Ø5.0	Ø5.5
5mm - Cover Screw included	AnyRidge					
		Core 3.3				
		Core 3.8				
		Core 4.3				
		Core 4.8				
		Core 3.5				
	AnyOne Refer to page.230					
		Core 3.3				
		Core 3.8				
		Core 4.0				
		Core 4.3				
		Core 4.8				
6.2mm - Cover Screw included	AnyRidge					
		Core 3.3				
		Core 3.8				
		Core 4.0				
		Core 4.3				
		Core 4.8				
	AnyOne Refer to page.230					
		Core 3.3				
		Core 3.8				
		Core 4.0				
		Core 4.3				
		Core 4.8				

Surgical Kit for Short Implant Solution



Scan here



Sterilization

Important! Flattening Drill

- Flattens irregular bone for accurate stopper drilling
- Designed to engage with flattening lance & housing, 2 kinds of housing to match diameters of different final drills (Ø5.0 & Ø6.0)
- Ø5.0 = Stopper Drill Ø2.0 ~ Ø4.3
- Ø6.0 = Stopper Drill Ø4.8 ~ Ø5.4
- Housing boundary guides drilling position of fixture

Diameter	Length(mm)	Ref.C
Ø5.0 / Ø2.0	3.5	FD5020
Ø6.0 / Ø2.0		FD6020

(*) Separate sales item



Stopper Drill

- TiN coated for enhanced corrosion & abrasion resistance

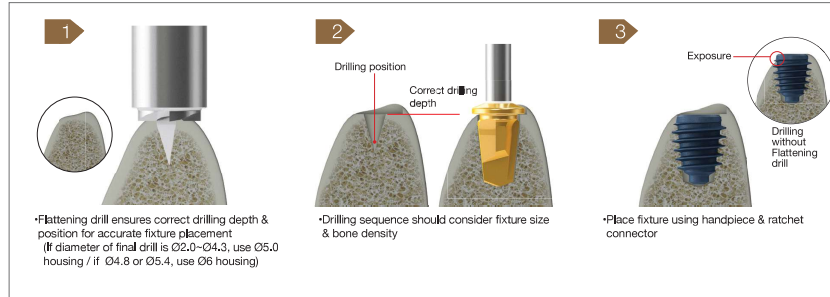
Profile Diameter	Length (mm)	Ref.C
Ø2.0	6.0	MS2005M
Ø2.5		MS2505M
Ø2.8		MS2805M
Ø3.3		MS3305M
Ø3.8		MS3805M
Ø4.3		MS4305M
Ø4.8		MS4805M
Ø5.4		MS5405M



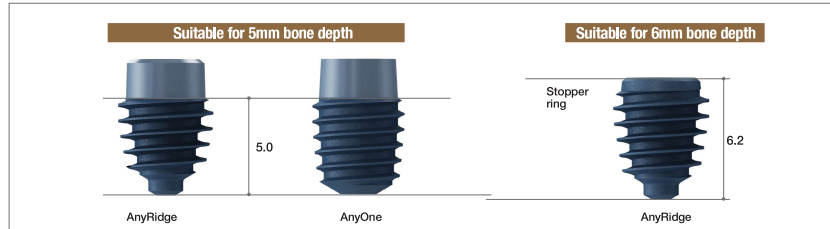
(*) Separate sales item

Quick
Reminder

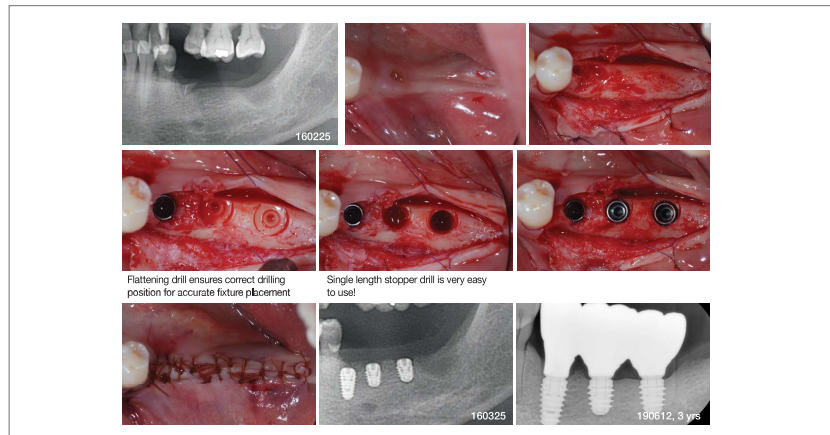
➔ Drilling Protocol



Drilling depth guide



➔ Clinical Case



➔ Fixture Size

Short Implant

- Cover Screw included

Fixture Diameter (mm)	Core (mm)	Length (mm)	Ref.C
Ø3,5	3,3	5	AR333505C
Ø4,0	3,3		AR334005C
Ø4,5	3,3		AR334505C
	3,8		AR384505C
Ø5,0	3,3		AR335005C
	3,8		AR385005C
Ø5,5	4,3	AR435005C	
	3,3	AR335505C	
	3,8	AR385505C	
	4,3	AR435505C	
	4,8	AR485505C	



Short Implant

- Cover Screw included

Fixture Diameter (mm)	Core (mm)	Length (mm)	Ref.C
Ø5,0	3,3	6,2	FAN HX5007C
	3,8		AR385007C
	4,0		FAN HX5007SC
	4,3		AR435007C
Ø5,5	3,3		FAN HX5507C
	3,8		AR385507C
	4,3	FAN HX5507SC	
	4,3	AR435507C	
	4,8	AR485507C	

